

CHARLESTON COURT AT ABACOA

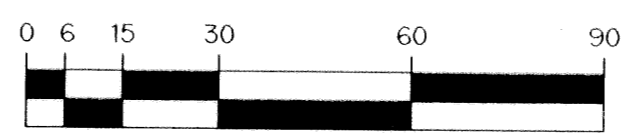
BEING A REPLAT OF ALL OF TRACT RD1C ACCORDING TO THE PLAT OF ABACOA PLAT NO. 1, AS RECORDED IN PLAT BOOK 78, PAGES 145 THROUGH 163, INCLUSIVE, OF THE PUBLIC RECORDS OF PALM BEACH COUNTY, FLORIDA. LYING IN SECTION 23, TOWNSHIP 41 SOUTH, RANGE 42 EAST, TOWN OF JUPITER, PALM BEACH COUNTY, FLORIDA

SHEET 3 OF 4 NOVEMBER, 1998

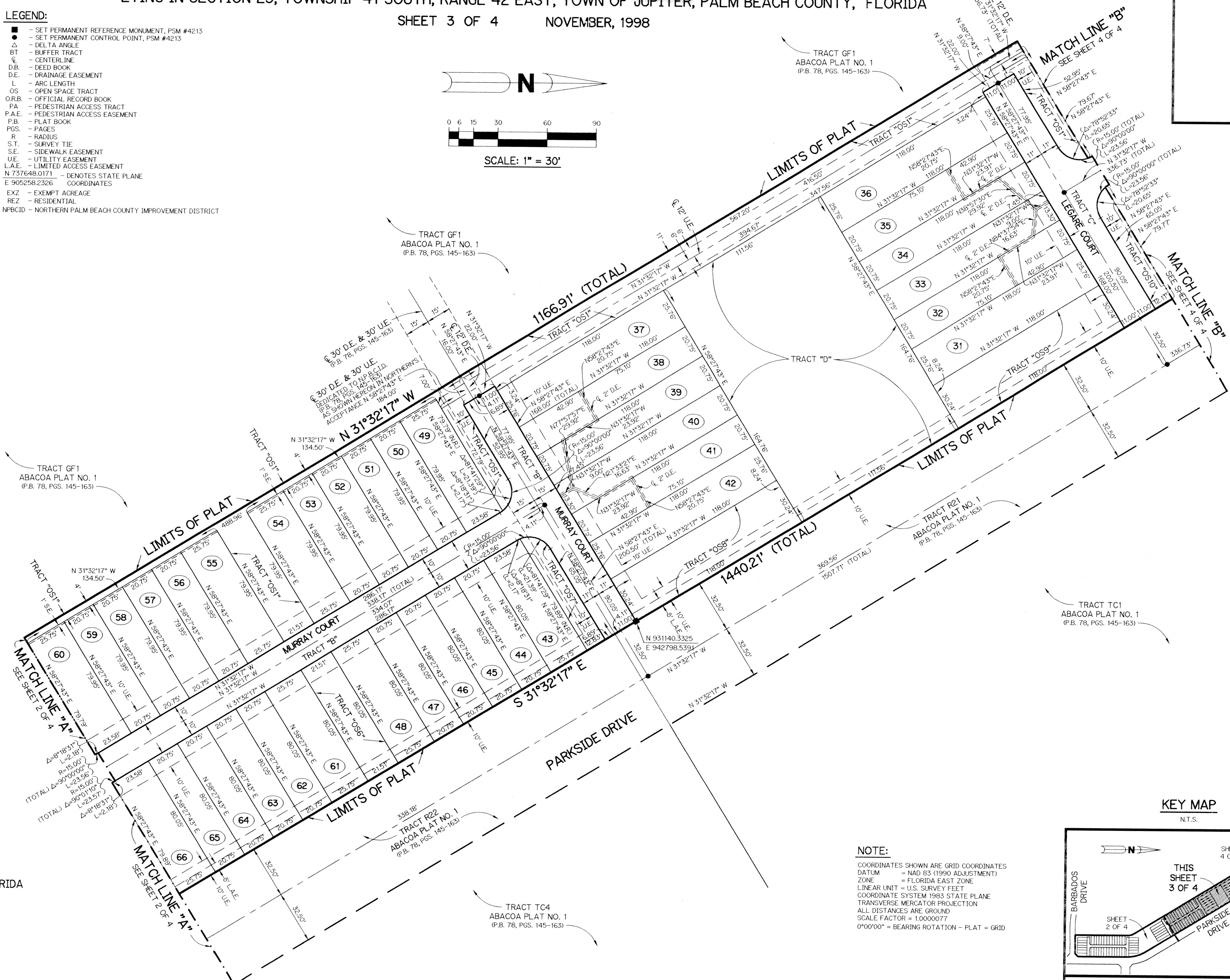
TRACT	ACREAGE	LAND USE	TRACT	ACREAGE	LAND USE
LOT 1	0.070 AC.	REZ	LOT 65	0.038 AC.	REZ
LOT 2	0.056 AC.	REZ	LOT 66	0.047 AC.	REZ
LOT 3	0.056 AC.	REZ	LOT 67	0.071 AC.	REZ
LOT 4	0.056 AC.	REZ	LOT 68	0.056 AC.	REZ
LOT 5	0.056 AC.	REZ	LOT 69	0.056 AC.	REZ
LOT 6	0.070 AC.	REZ	LOT 70	0.056 AC.	REZ
LOT 7	0.047 AC.	REZ	LOT 71	0.056 AC.	REZ
LOT 8	0.038 AC.	REZ	LOT 72	0.071 AC.	REZ
LOT 9	0.038 AC.	REZ	LOT 73	0.047 AC.	REZ
LOT 10	0.038 AC.	REZ	LOT 74	0.038 AC.	REZ
LOT 11	0.038 AC.	REZ	LOT 75	0.038 AC.	REZ
LOT 12	0.047 AC.	REZ	LOT 76	0.038 AC.	REZ
LOT 13	0.047 AC.	REZ	LOT 77	0.038 AC.	REZ
LOT 14	0.038 AC.	REZ	LOT 78	0.047 AC.	REZ
LOT 15	0.038 AC.	REZ	LOT 79	0.047 AC.	REZ
LOT 16	0.038 AC.	REZ	LOT 80	0.038 AC.	REZ
LOT 17	0.038 AC.	REZ	LOT 81	0.038 AC.	REZ
LOT 18	0.047 AC.	REZ	LOT 82	0.038 AC.	REZ
LOT 19	0.047 AC.	REZ	LOT 83	0.038 AC.	REZ
LOT 20	0.038 AC.	REZ	LOT 84	0.047 AC.	REZ
LOT 21	0.038 AC.	REZ	LOT 85	0.047 AC.	REZ
LOT 22	0.038 AC.	REZ	LOT 86	0.038 AC.	REZ
LOT 23	0.038 AC.	REZ	LOT 87	0.038 AC.	REZ
LOT 24	0.047 AC.	REZ	LOT 88	0.038 AC.	REZ
LOT 25	0.047 AC.	REZ	LOT 89	0.038 AC.	REZ
LOT 26	0.038 AC.	REZ	LOT 90	0.047 AC.	REZ
LOT 27	0.038 AC.	REZ	LOT 91	0.047 AC.	REZ
LOT 28	0.038 AC.	REZ	LOT 92	0.038 AC.	REZ
LOT 29	0.038 AC.	REZ	LOT 93	0.038 AC.	REZ
LOT 30	0.047 AC.	REZ	LOT 94	0.038 AC.	REZ
LOT 31	0.070 AC.	REZ	LOT 95	0.038 AC.	REZ
LOT 32	0.056 AC.	REZ	LOT 96	0.047 AC.	REZ
LOT 33	0.056 AC.	REZ	LOT 97	0.047 AC.	REZ
LOT 34	0.056 AC.	REZ	LOT 98	0.038 AC.	REZ
LOT 35	0.056 AC.	REZ	LOT 99	0.038 AC.	REZ
LOT 36	0.070 AC.	REZ	LOT 100	0.038 AC.	REZ
LOT 37	0.070 AC.	REZ	LOT 101	0.038 AC.	REZ
LOT 38	0.056 AC.	REZ	LOT 102	0.047 AC.	REZ
LOT 39	0.056 AC.	REZ	LOT 103	0.053 AC.	REZ
LOT 40	0.056 AC.	REZ	LOT 104	0.043 AC.	REZ
LOT 41	0.056 AC.	REZ	LOT 105	0.043 AC.	REZ
LOT 42	0.070 AC.	REZ	LOT 106	0.043 AC.	REZ
LOT 43	0.047 AC.	REZ	LOT 107	0.043 AC.	REZ
LOT 44	0.038 AC.	REZ	LOT 108	0.053 AC.	REZ
LOT 45	0.038 AC.	REZ	TOTAL	4.334 AC.	REZ
LOT 46	0.038 AC.	REZ	OS1	2.504 AC.	EXZ
LOT 47	0.038 AC.	REZ	OS2	0.021 AC.	EXZ
LOT 48	0.047 AC.	REZ	OS3	0.038 AC.	EXZ
LOT 49	0.047 AC.	REZ	OS4	0.022 AC.	EXZ
LOT 50	0.038 AC.	REZ	OS5	0.023 AC.	EXZ
LOT 51	0.038 AC.	REZ	OS6	0.040 AC.	EXZ
LOT 52	0.038 AC.	REZ	OS7	0.023 AC.	EXZ
LOT 53	0.038 AC.	REZ	OS8	0.082 AC.	EXZ
LOT 54	0.047 AC.	REZ	OS9	0.082 AC.	EXZ
LOT 55	0.047 AC.	REZ	OS10	0.021 AC.	EXZ
LOT 56	0.038 AC.	REZ	OS11	0.040 AC.	EXZ
LOT 57	0.038 AC.	REZ	OS12	0.021 AC.	EXZ
LOT 58	0.038 AC.	REZ	TOTAL	2.917 AC.	EXZ
LOT 59	0.038 AC.	REZ	TRACT "A"	0.319 AC.	EXZ
LOT 60	0.047 AC.	REZ	TRACT "B"	0.320 AC.	EXZ
LOT 61	0.047 AC.	REZ	TRACT "C"	0.320 AC.	EXZ
LOT 62	0.038 AC.	REZ	TRACT "D"	0.422 AC.	EXZ
LOT 63	0.038 AC.	REZ	TOTAL	1.381 AC.	EXZ
LOT 64	0.038 AC.	REZ	PLAT TOTAL	9.232 AC.	

LEGEND:

- - SET PERMANENT REFERENCE MONUMENT, PSM #4213
- - SET PERMANENT CONTROL POINT, PSM #4213
- △ - DELTA ANGLE
- BT - BUFFER TRACT
- CL - CENTERLINE
- D.B. - DEED BOOK
- D.E. - DRAINAGE EASEMENT
- L - ARC LENGTH
- OS - OPEN SPACE TRACT
- O.R.B. - OFFICIAL RECORD BOOK
- PA - PEDESTRIAN ACCESS TRACT
- P.A.E. - PEDESTRIAN ACCESS EASEMENT
- P.B. - PLAT BOOK
- PGS. - PAGES
- R - RADIUS
- S.T. - SURVEY TIE
- S.E. - SIDEWALK EASEMENT
- U.E. - UTILITY EASEMENT
- L.A.E. - LIMITED ACCESS EASEMENT
- N 737648.0171 - DENOTES STATE PLANE COORDINATES
- E 905258.2326 - DENOTES STATE PLANE COORDINATES
- EXZ - EXEMPT ACREAGE
- REZ - RESIDENTIAL
- NPBCID - NORTHERN PALM BEACH COUNTY IMPROVEMENT DISTRICT



SCALE: 1" = 30'



SUBDIVISION MAP NO. 23
 PAGE 84
 BOOK 78
 FLOOD ZONE -
 ZONING -
 QUAD # -
 SE -
 TAZ - 02
 TOWN NAME - Town of Jupiter
 PUD NAME -
 ZIP CODE -

THIS INSTRUMENT PREPARED BY
 PERRY C. WHITE, P.S.M. 4213, STATE OF FLORIDA
 LAWSON, NOBLE AND WEBB, INC.
 ENGINEERS PLANNERS SURVEYORS
 420 COLUMBUS DRIVE
 WEST PALM BEACH, FLORIDA
 LB 6674

NOTE:
 COORDINATES SHOWN ARE GRID COORDINATES
 DATUM = NAD 83 (1990 ADJUSTMENT)
 ZONE = FLORIDA EAST ZONE
 LINEAR UNIT = U.S. SURVEY FEET
 COORDINATE SYSTEM 1983 STATE PLANE
 TRANSVERSE MERCATOR PROJECTION
 ALL DISTANCES ARE GROUND
 SCALE FACTOR = 1.000077
 0°00'00" = BEARING ROTATION - PLAT = GRID

